

Lancashire County Council

Education and Children's Services Scrutiny Committee

Wednesday, 1st September, 2021 at 10.30 am in Committee Room 'A' - The Tudor Room, County Hall, Preston

Agenda

Part I (Open to Press and Public)

No.	Item	
-----	------	--

1.	Apologies	
----	------------------	--

2.	Constitution: Chair and Deputy Chair; Membership; Terms of Reference	(Pages 1 - 8)
----	---	---------------

3.	Disclosure of Pecuniary and Non-Pecuniary Interests	
----	--	--

Members are asked to consider any Pecuniary and Non-Pecuniary Interests they may have to disclose to the meeting in relation to matters under consideration on the Agenda.

4.	Minutes of the meeting held on 11 March 2021	(Pages 9 - 14)
----	---	----------------

5.	School Place Provision Planning	(Pages 15 - 32)
----	--	-----------------

6.	Work Programme 2021/2022	(Pages 33 - 38)
----	---------------------------------	-----------------

7.	Urgent Business	
----	------------------------	--

An item of urgent business may only be considered under this heading where, by reason of special circumstances to be recorded in the Minutes, the Chair of the meeting is of the opinion that the item should be considered at the meeting as a matter of urgency. Wherever possible, the Chief Executive should be given advance warning of any Member's intention to raise a matter under this heading.

8.	Date of Next Meeting	
----	-----------------------------	--

The next meeting of the Education and Children's Services Scrutiny Committee will be held on Tuesday 5 October 2021 at 10.30am at County Hall, Preston.

L Sales

County Hall
Preston

Director of Corporate Services

Agenda Item 2

Education and Children's Services Scrutiny Committee

Meeting to be held on Wednesday, 1 September 2021

Electoral Division affected:
All Divisions

Constitution: Chair and Deputy Chair; Membership; Terms of Reference (Appendix 'A' refers)

Contact for further information:

Samantha Parker, Tel: (01772) 538221, Senior Democratic Services Officer
(Overview and Scrutiny), sam.parker@lancashire.gov.uk

Executive Summary

This report sets out the constitution, membership, chair and deputy chair and terms of reference of the new Education and Children's Services Scrutiny Committee for the remainder of the municipal year 2021/22.

Recommendation

The Education and Children's Services Scrutiny Committee is asked to note:

1. The appointment of County Councillors Andrea Kay and Julia Berry as Chair and Deputy Chair of the Committee for the remainder of the 2020/22 municipal year;
2. The Membership of the Committee following the County Council's Annual Meeting on 15 July 2021; and
3. The new Terms of Reference of the Committee.

Background and Advice

The County Council at its meeting on the 15 July 2021, approved the constitution of the Education and Children's Services Scrutiny Committee as being 16 members on the basis of 11 from the Conservative group, 5 from the Labour group and 5 voting co-opted members and 1 non-voting co-opted member.

The following members were appointed by their respective groups:

County Councillors (16):

S Barnes	N Khan
J Berry	S Malik
A Cheetham	J Mein
S Clarke	M Salter

S Hind	A Sutcliffe
T Hurn	R Swarbrick
A Kay	R Woollam
S Jones	B Yates

Voting Co-Opted Members (5):

Mr S Smith – Representing RC Schools
Mr D Ballard - Representing CE Schools
Vacant - Representing Free Church Schools
Mrs J Hamid - Representing Parent Governors (Secondary)
Mr J Withington - Representing Parent Governors (Primary)

Non-Voting Co-Opted Member (1):

Vacant – Representing Youth Council

The Full Council also appointed County Councillors Andrea Kay and Julia Berry as Chair and Deputy Chair of the Committee for the 2021/22 municipal year.

The Committee’s new Terms of Reference are set out at Appendix ‘A’.

Consultations

N/A

Implications:

This item has the following implications, as indicated:

Risk management

There are no risk management implications arising from this item.

**Local Government (Access to Information) Act 1985
List of Background Papers**

Paper	Date	Contact/Tel
-------	------	-------------

None

Reason for inclusion in Part II, if appropriate

N/A

Appendix A

Part 2 – Article 5 (Overview and Scrutiny)

The council has established the following Overview and Scrutiny Committees:

Committee	Responsibility	Membership
Internal Scrutiny Committee	Review and Scrutinise decisions, actions and work of the Council	12 County Councillors
Education and Children's Services Scrutiny Committee	To review and scrutinise issues around: education services provided by the council including those education functions of a Children's Services authority; and Children and young people's services including the statutory powers of a scrutiny committee as they relate to the NHS.	16 County Councillors, 5 voting co-optees, (comprising three Church representatives and two parent governor representatives) who shall have voting rights in relation to any education functions which are the responsibility of the Executive, and one non-voting co-optee representing the Youth Council.
Health Scrutiny Committee	Statutory responsibility for scrutiny of adult and universal health services	12 County Councillors, plus 12 non-voting co-opted members, nominated by the 12 district councils
External Scrutiny Committee	Review and scrutinise issues, services and activities carried out by external organisations	12 County Councillors

All Overview and Scrutiny Committees have the following Terms of Reference:

1. To review decisions made, or other action taken, in connection with the discharge of any functions which are undertaken by the Cabinet collectively, or in the case of urgent decisions which cannot await a Cabinet meeting by the Leader of the Council (or in his/her absence the Deputy Leader) and the relevant Cabinet Member, or Cabinet committees.
2. To make reports or recommendations to the Full Council, the Cabinet, the Leader, Deputy Leader or other Cabinet Members as necessary or

**(Last updated – 17 July 2020 – Full Council decision 16 July 2020
Owner – Democratic Services)**

Cabinet committees with respect to the discharge of any functions which are undertaken by them or in respect of any functions which are not the responsibility of the Cabinet.

3. To hold general policy reviews and to assist in the development of future policies and strategies (whether requested by the Full Council or the Cabinet, individual Cabinet members, Cabinet committees, or decided by the Committee itself) and, after consulting with any appropriate interested parties, to make recommendations to the Cabinet, individual Cabinet members, Cabinet committees, Full Council or external organisations as appropriate.
4. To consider any matter brought to it following a request by a County Councillor or a Co-optee of the Committee who wishes the issue to be considered.
5. To consider requests for "Call In" in accordance with the Procedural Standing Orders – Overview and Scrutiny Rules at Appendix C – Appendix 3 of the Constitution
6. To request a report by the Cabinet to Full Council where a decision which was not treated as being a key decision has been made and the Overview and Scrutiny Committee is of the opinion that the decision should have been treated as a key decision
7. To request the Internal Scrutiny Committee to establish task groups and other working groups and panels as necessary.
8. To request that the Internal Scrutiny Committee establish as necessary joint working arrangements with district councils and other neighbouring authorities
9. To invite to any meeting of the Committee and permit to participate in discussion and debate, but not to vote, any person not a County Councillor whom the Committee considers would assist it in carrying out its functions.
10. To require any Councillor, an Executive Director or a senior officer nominated by him/her to attend any meeting of the Committee to answer questions and discuss issues.

Internal Scrutiny Committee

1. To review and scrutinise all services provided by the authority, unless specifically covered by the Terms of Reference of another Overview and Scrutiny Committee.
2. To consider matters relating to the general effectiveness and development of Overview and Scrutiny in the authority including training for county councillors and co-optees.

**(Last updated – 17 July 2020 – Full Council decision 16 July 2020
Owner – Democratic Services)**

3. To consider requests from the other Overview and Scrutiny Committees on the establishment of task groups, and to establish, task groups, and other working groups and panels as necessary, as well as joint working arrangements with District councils and other neighbouring authorities including joint committees to exercise the statutory function of joint health scrutiny committees under the NHS Act 2006.
4. To determine which Overview and Scrutiny Committee considers a particular matter where this is not clear.
5. To establish arrangements for the scrutiny of member development, and receive reports from the Member Development Working Group.
6. To recommend the Full Council to co-opt on to a Committee persons with appropriate expertise, without voting rights

Education and Children's Services Scrutiny Committee

1. To scrutinise matters relating to education delivered by the authority and other relevant partners.
2. To fulfil all the statutory functions of an Overview and Scrutiny Committee as they relate to education functions of a Children's Services Authority.
3. To scrutinise matters relating to services for Children and Young People delivered by the authority and other relevant partners.

The following provisions relating to scrutiny of health and social care relate to services for children and young people:

4. To review and scrutinise any matter relating to the planning, provision and operation of the health service in the area and make reports and recommendations to NHS bodies as appropriate.
5. In reviewing any matter relating to the planning, provision and operation of the health service in the area, to invite interested parties to comment on the matter and take account of relevant information available, particularly that provided by the Local Healthwatch.
6. The review and scrutinise any local services planned or provided by other agencies which contribute towards the health improvement and the reduction of health inequalities in Lancashire and to make recommendations to those agencies, as appropriate.
7. In the case of contested NHS proposals for substantial service changes, to take steps to reach agreement with the NHS body.

**(Last updated – 17 July 2020 – Full Council decision 16 July 2020
Owner – Democratic Services)**

8. In the case of contested NHS proposals for substantial service changes where agreement cannot be reached with the NHS, to refer the matter to the relevant Secretary of State.
9. To refer to the relevant Secretary of State any NHS proposal which the Committee feels has been the subject of inadequate consultation.
10. To scrutinise the social care services provided or commissioned by NHS bodies exercising local authority functions under Section 31 of the Health Act 1999.
11. To draw up a forward programme of health scrutiny in consultation with other local authorities, NHS partners, the Local Healthwatch and other key stakeholders.
12. To acknowledge within 20 working days to referrals on relevant matters from the Local Healthwatch or Local Healthwatch contractor, and to keep the referrer informed of any action taken in relation to the matter.
13. To require the Chief Executives of local NHS bodies to attend before the Committee to answer questions, and to invite the chairs and nonexecutive directors of local NHS bodies to appear before the Committee to give evidence.
14. To invite any officer of any NHS body to attend before the Committee to answer questions or give evidence.

Health Scrutiny Committee

1. To scrutinise matters relating to health and adult social care delivered by the authority, the National Health Service and other relevant partners.
2. In reviewing any matter relating to the planning, provision and operation of the health service in the area, to invite interested parties to comment on the matter and take account of relevant information available, particularly that provided by the Local Healthwatch
3. In the case of contested NHS proposals for substantial service changes, to take steps to reach agreement with the NHS body
4. In the case of contested NHS proposals for substantial service changes where agreement cannot be reached with the NHS, to refer the matter to the relevant Secretary of State.
5. To refer to the relevant Secretary of State any NHS proposal which the Committee feels has been the subject of inadequate consultation.
6. To scrutinise the social care services provided or commissioned by NHS bodies exercising local authority functions under the Health and Social Care Act 2012.

**(Last updated – 17 July 2020 – Full Council decision 16 July 2020
Owner – Democratic Services)**

7. To request that the Internal Scrutiny Committee establish as necessary joint working arrangements with district councils and other neighbouring authorities.
8. To draw up a forward programme of health scrutiny in consultation with other local authorities, NHS partners, the Local Healthwatch and other key stakeholders.
9. To acknowledge within 20 working days to referrals on relevant matters from the Local Healthwatch or Local Healthwatch contractor, and to keep the referrer informed of any action taken in relation to the matter.
10. To require the Chief Executives of local NHS bodies to attend before the Committee to answer questions, and to invite the chairs and non-executive directors of local NHS bodies to appear before the Committee to give evidence.
11. To invite any officer of any NHS body to attend before the Committee to answer questions or give evidence.
12. To recommend the Full Council to co-opt on to the Committee persons with appropriate expertise in relevant health matters, without voting rights.
13. To establish and make arrangements for a Health Steering Group the main purpose of which to be to manage the workload of the full Committee more effectively in the light of the increasing number of changes to health services.

External Scrutiny Committee

1. To review and scrutinise issues, services or activities carried out by external organisations including public bodies, the voluntary and private sectors, partnerships and traded services which affect Lancashire or its inhabitants, and to make recommendations to the Full Council, Cabinet, Cabinet Members, Cabinet committees or external organisations as appropriate.
2. To review and scrutinise the operation of the Crime and Disorder Reduction Partnership in Lancashire in accordance with the Police and Justice Act 2006 and make reports and recommendations to the responsible bodies as appropriate
3. In connection with 2. above, to require an officer or employee of any of the responsible bodies to attend before the Committee to answer questions
4. To co-opt additional members in accordance with the Police and Justice Act 2006 if required, and to determine whether those co-opted members should be voting or non-voting

**(Last updated – 17 July 2020 – Full Council decision 16 July 2020
Owner – Democratic Services)**

5. To review and scrutinise the exercise by risk management authorities of flood risk management functions or coastal erosion risk management functions which may affect the local authority's area

Lancashire County Council

Education and Children's Services Scrutiny Committee

Minutes of the Meeting held on Thursday, 11th March, 2021 at 10.30 am in Teams Virtual Meeting - Teams

Present:

County Councillor Andrea Kay (Chair)

County Councillors

M Dad	J Mein
Mrs S Charles	E Nash
A Cheetham	J Potter
S Clarke	J Purcell
J Eaton BEM	M Salter
A Gardiner	D T Smith
N Hennessy	P Steen
S Malik	

1. Apologies

Apologies were received from Mrs Janet Hamid, (Co-Optee Voting) Representing Parent Governors (Secondary).

2. Disclosure of Pecuniary and Non-Pecuniary Interests

None were disclosed.

3. Minutes of the special meeting held on 2 February 2021 and the ordinary meeting held on 9 February 2021

Resolved: The minutes from the special meeting held on 2 February 2021 and the ordinary meeting held on 9 February were confirmed as an accurate record.

4. Update on Family Safeguarding model

The Chair welcomed to the meeting Sharon Hubber, Director of Children's Social Care and Mandy Williams, Head of Service Family Safeguarding.

The report provided was a follow up report arising from the former Children's Services Scrutiny Committee meeting held on the 15th January 2020 when it considered a report on the Neglect Strategy. Lancashire County Council launched the new Family Safeguarding Model on the 11th February 2021. A

presentation was also provided to the Education and Children's Services Scrutiny Committee. A copy of which is set out in the minutes.

To support the implementation of the Model it was necessary to remodel the whole Children's Social Care Department. This took place on the 4th January 2021 allowing for the staff and management to be in place ready for the full launch on the 11th February. This was the date the evaluation of the Family Safeguarding Model began. The evaluation was being undertaken by 'The What Works Centre' who were commissioned by the Department of Education and would conclude in 2023.

The official launch took place on the 1st March. This was a virtual event that was opened by the leader of the county council with several speakers who were both external and internal. The purpose of the launch was to ensure all partners were aware of the implementation and provided staff with an opportunity to say how they felt to be in the new structure and what they were hoping to achieve.

During the presentation, the following points were highlighted:

- The reason for implementing the new Family Safeguarding Model was that there was a rising number of children in care and care proceedings. Resources were largely spent on assessment and monitoring and change was not being achieved.
- It was important to have open and honest relationships with families.
- One of the key components of Family Safeguarding was keeping more children safe within their families.
- Multi-disciplinary teams were in place working together to support children and parents.
- There was a new computer system in place to reduce bureaucracy. This would allow social workers to spend more time with families and less time doing paperwork.
- Family Safeguarding Teams would have a team leader, a consultant social worker, 5 social workers, a child and family practitioner, a domestic abuse practitioner, either a mental health or substance misuse specialist and a team co-ordinator.
- For families the new Family Safeguarding Model would mean a reduction in repeat police call outs to domestic abuse incidents, a reduction in emergency hospital admissions for adults, a reduction in child protection plans, a reduction in care proceedings and an improvement in school attendance.
- Regarding the next steps, services would be delivered together to meet the needs of all family members.
- There would be a commitment from the partnership to keep families together safely and understanding the impacts of removal of children.
- There would be data sharing, and strong shared leadership and ownership across the partnership.

In response to questions and comments from members, the following information was clarified:

- There was concern over Lancashire County Council receiving notification of children who were in private care through other court orders from other local authorities. It was a legal mandate to inform the Executive Director in Lancashire if a child was placed in another authority. Last year Lancashire County Council wrote to every single local authority that had informed it they had children in the Lancashire area to offer help. The county council also informed local authorities about children it had placed with them.
- Members requested details of who the team leaders were for their areas so as they could contact them when issues arose. After the elections there would be awareness training on family safeguarding.
- The committee stated it was important to free up practitioners in order to spend more time with families. During the pandemic Lancashire County Council social workers had been very innovative in the way they had contacted families. Equipment had been provided to families so they could be contacted virtually. Garden visits had also taken place. Where there was concern staff were entering family homes with the proper protection. All county council social workers had been vaccinated early on.
- The Children's Social Care Team were able to support families that wanted to work with them in order for the family to remain together in a safe way.
- The committee was informed that there were 21 Family Safeguarding Teams across four areas of Lancashire looking at the needs in those areas. How need was managed in these geographical areas was being looked into. Family Safeguarding needed to be more community based and more accessible to families.
- The Multi Agency Safeguarding Hub (MASH) made assessments of family situations before deciding if the Family Safeguarding Team needed to get involved.
- 15 staff in a team was financially achievable. Finance had been provided by the DfE and Lancashire County Council so that the number of social workers in the teams could be increased. There was a large recruitment campaign going on.
- Financially there would be differences to where money was spent. Cabinet had agreed to the change in how residential care would operate. The money would be used to create a different residential estate for the children of Lancashire.
- Regarding criteria for success, The Children's Social Care Team would like to see more children in Early Help and more children in Children in Need. This would show that the team was working with families in a more conversational, partnership way.
- The committee enquired about what was driving the increase in the demand for support. Poverty had a major impact on the work of social care and this had increased during the pandemic. Alcohol misuse, domestic abuse and mental health also contributed to demand.

- The question of how easy it was to predict where early intervention was needed. The Children's Social Team was now engaged with the private, voluntary and independent providers around the county's nurseries and Early Years sector to make sure children were school ready.
- In terms of domestic abuse, the team had undertaken motivational interview training and around 500 staff had completed this training at different levels. It was compulsory for staff to undertake this training. The Children's Social Team worked on the premise of how can it help keep the family together.
- Some of the domestic abuse workers were probation officers who already undertake domestic abuse perpetrator programmes.
- The Children's Social Team was engaging with Mental Health Services to try and persuade some of their staff to come out of clinician working and work in the community.

Resolved: That;

1. The progress of the Family Safeguarding Model and how the service would move forward following implementation be noted.
2. An update report be presented to the committee in six months.

5. Overview and Scrutiny Work Programme 2020/2021

As this was the last scheduled meeting of the committee during this municipal year and current administrative term, the Chair proposed that the items currently listed on the work programme be considered for inclusion on the 2021/22 work programme by the new committee with responsibility for scrutinising education and children's services following the elections in May 2021.

Resolved: That the items currently listed on the Education and Children's Services Scrutiny Committee's work programme be considered for inclusion on the 2021/2022 work programme by the new committee with responsibility for scrutinising education and children's services following the elections in May 2021.

6. Urgent Business

There were no items of Urgent Business.

7. Date of Next Meeting

The next scheduled meeting of the Education and Children's Services Committee would take place on Tuesday 8 June at 10.30am.

L Sales
Director of Corporate Services

County Hall
Preston

School Place Provision Strategy

2021 to 2026

The right number of school places, in the right areas, at the right time to meet demand

Asset Management Service



Corporate Strategy

Our vision

Lancashire will be the place to live

Lancashire is a county of diverse communities.

It is a place where people are valued and will feel able to have their say. It will be a county where housing meets the needs of all ages, where people are safe and feel safe, surrounded by clean, green spaces where everyone can enjoy a good quality of life and be happy.

It will be a county where:

- Children of all abilities do well in our first class schools, colleges and universities, gaining skills for life
- People have good housing
- People live healthier lives for longer
- People can travel on good quality, reliable public transport
- People get on well together and are connected to their local community
- Our most vulnerable people are protected and supported
- People make use of technology to access services, support and information



[More about living in Lancashire \(PDF\)](#)

What is School Planning?

- **Statutory duty** to provide a Lancashire place for every Lancashire child who wants one.
- **Mixed-economy of schools** (academy, voluntary aided, voluntary controlled, foundation, grammar etc.) where many determine their own admission arrangements.
- This relies on **collaboration** with and between maintained schools and academies in the county to ensure sufficiency of places.

School organisation in Lancashire

- All children in England between the age of 5 and 16 are entitled to a free place at a state school. State schools receive their funding through their local authority or directly from the government, this includes:
- Community schools, (local authority maintained) and follow the national curriculum. The council sets the admission criteria
- Voluntary controlled schools, set up by voluntary bodies (e.g., churches, foundations), the council sets the admission criteria
- Voluntary aided schools - sometimes supported by representatives from religious groups (e.g., diocese), the schools sets the admission criteria
- Academies and free schools, run by not-for-profit academy trusts, independent of the local authority, can follow a different curriculum and set their own admissions criteria
- The county council has a duty to facilitate the conversion of schools to academies (self-converter and/or directed)
- Grammar schools, can be run by any of the above, select pupils based on academic ability and often set a test to gain a place. All are academies in the county.

<https://www.gov.uk/types-of-school>

<https://www.lancashire.gov.uk/children-education-families/schools/find-a-school/>

Schools in Lancashire 2021-21 <https://explore-education-statistics.service.gov.uk/data-tables/>

	Independent	Pupil referral unit	State-funded nursery	State-funded primary	State-funded secondary	State-funded special school	
Academy alternative provision sponsor led		1					
Academy converter				10	24		
Academy special converter						1	
Academy sponsor led				9	9		
Community school				170	16		
Community special school						29	
Foundation school				5	7		
Free schools				1	3		
Free schools alternative provision		1					
Local authority nursery school			24				
Other independent school	31						
Other independent special school	27						
Pupil referral unit		8					
Total	58	10	24	482	82	30	628
Voluntary aided school				239	21		
Voluntary controlled school				48	2		

Pupils by school and establishment types

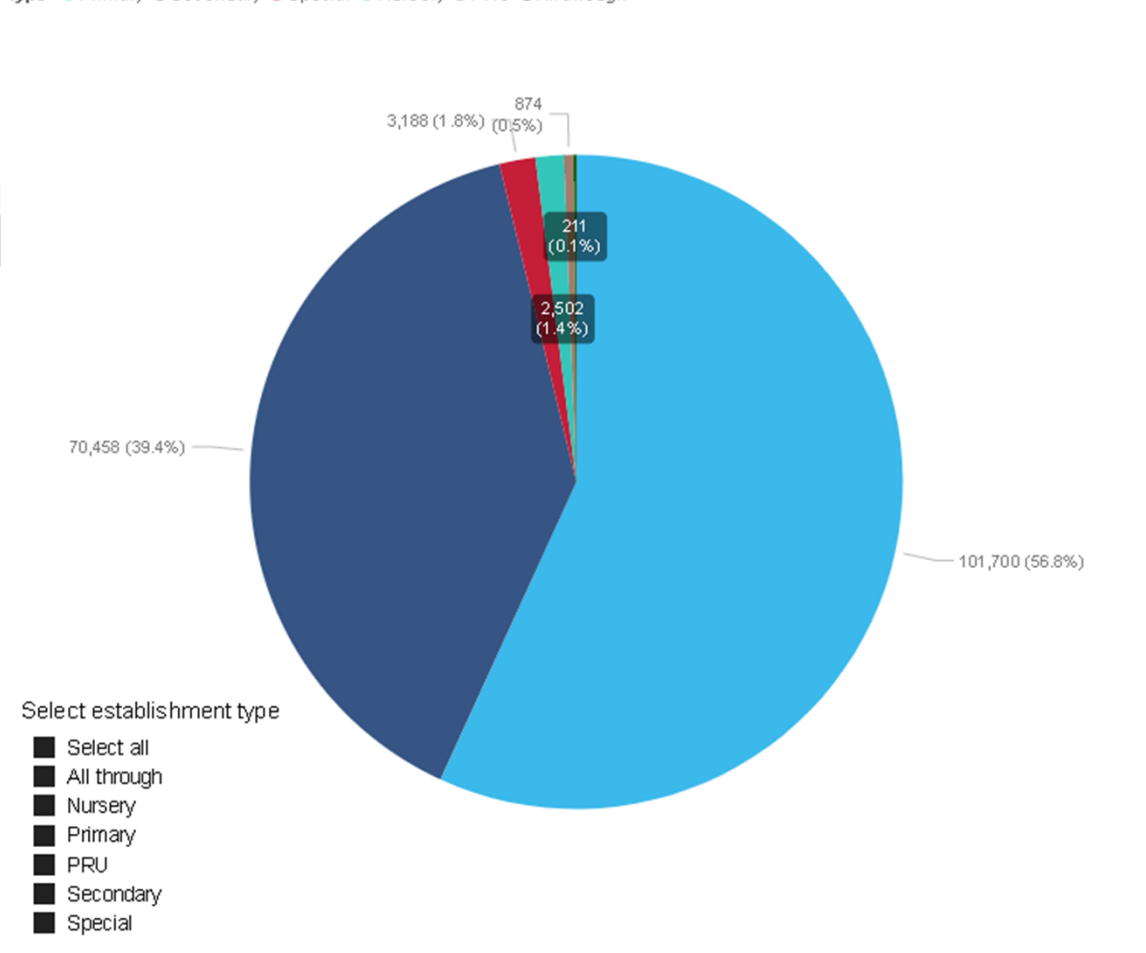
The school census is a statutory census that takes place during the autumn, spring and summer terms and collects information about individual pupils and about the schools themselves.

The May 2021 census showed that Lancashire had 178,933 pupils at 628 schools.

www.lancashire.gov.uk/lancashire-insight/education/school-census

Summary data - pupils by school and establishment types

Type ● Primary ● Secondary ● Special ● Nursery ● PRU ● All through



Context

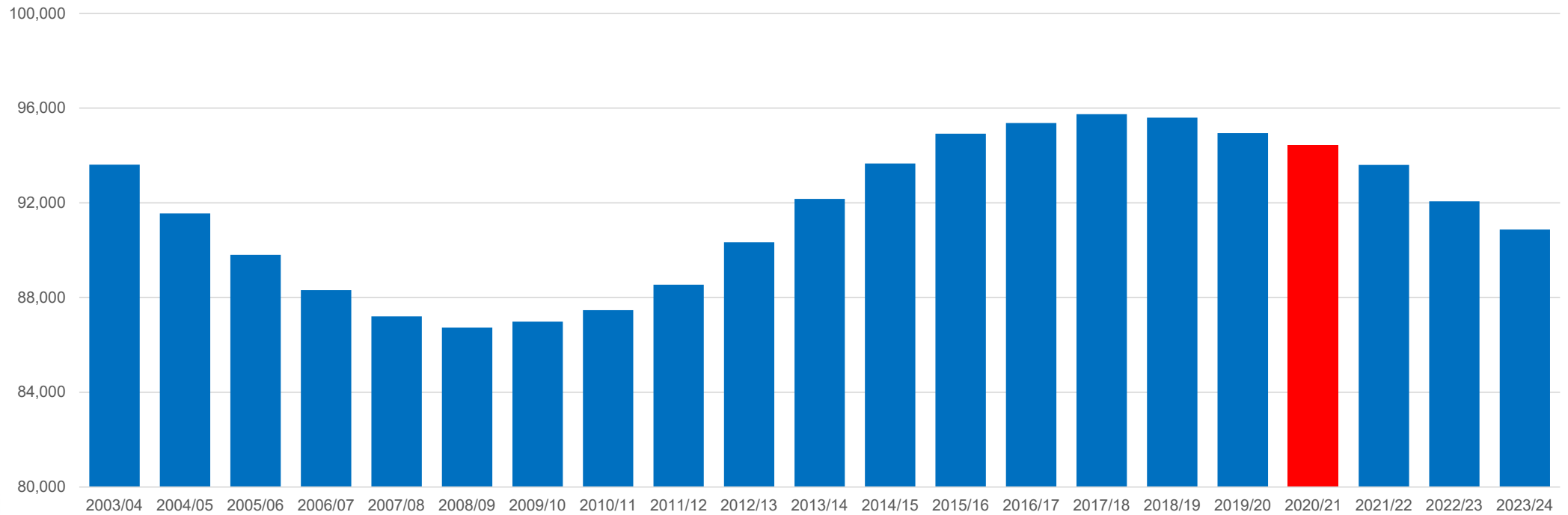
- Birth rates have fallen 6.5% over the last 5 years, and 9% over the last 10 years
- Higher number of pupils moving into secondary which is creating demand for places
- Pockets of growth in primary areas, mainly led by housing development and people moving into some areas
- Emerging number of surplus places in some areas

Performance: applications for Primary & Secondary September 2021 places:

- 13,940 applications
- 86.5% gain a place at their 1st preference school (82.2% nationally)
- 96.7% gain a place at one of their three preferences (95.6% nationally)

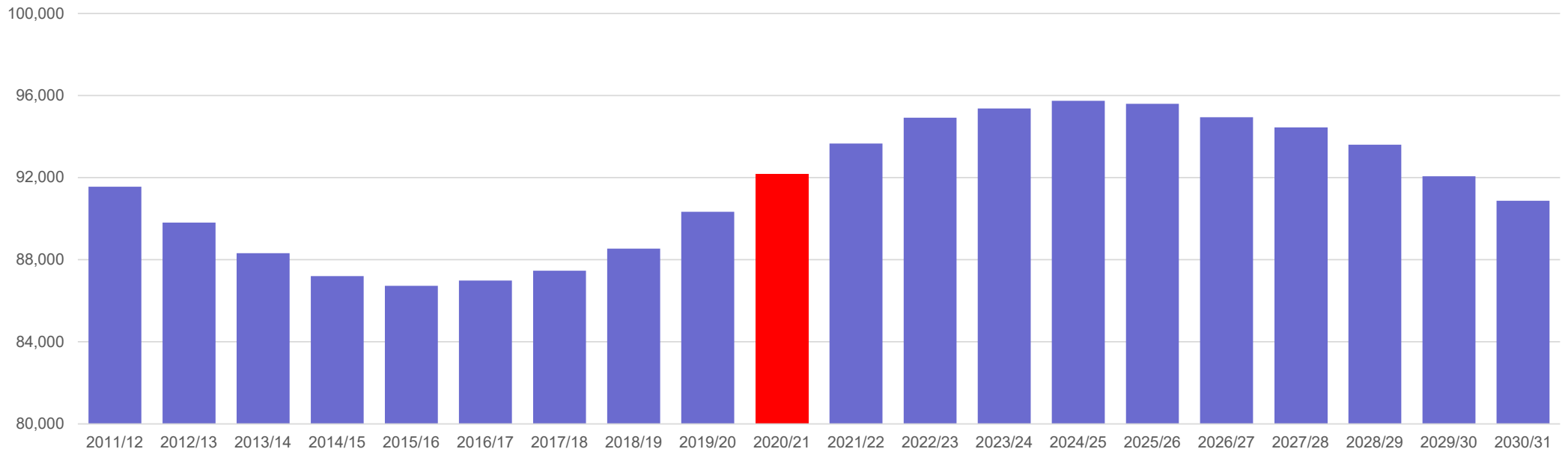
Primary phase

Primary school population based on cumulative births



Secondary phase

Secondary school population based on cumulative births



School planning approach

- Evidence based – twice yearly pupil **forecast** using pupil census, in-year migration and district supplied housing data.
- Statutory annual **School Capacity and Places Survey (SCAP)** to the Department for Education setting out place provision and forecast of need- generates Basic Need Grant. DfE scorecard of LA comparative performance (LCC scores highly).
- Primary schools are grouped in **70 planning areas** for planning purposes, reflecting travel to school catchments. Secondary schools are grouped by district.
- Planning may consider places **across district and planning area borders** to ensure viability of existing schools, as well as number of places taken up by pupils out of county and vice versa.
- **Geographic Priority Area (GPA)** reviews are carried out where appropriate (to reflect changes in an area).
- Development of the new **school place provision strategy 2021-26**

How we plan for specific projects

- Data gathering
- Analyse and scope need for additional places and other education priorities
- Desk top study of the school portfolio, consider s.77 playing field requirements, potential of sites to expand, programme budget
- Engage with education Locality Boards, schools, dioceses, trusts and councillors
- Invite expressions of interest
- Full feasibility study including assessment of projects against the principles underpinning capital investment & initial cost estimates
- Consultation, statutory process and cabinet decision as appropriate

Data gathering

Pupil Projections

We use 5 year pupil projections involving:

- Current & previous years' school census numbers
- Inward and outward migration (or movement) of pupils between areas and schools
- School net capacity assessment of buildings
- Schools' admission numbers
- Birth data
- District supplied planned housing data for the next 5 years.
- Further information can be found in our published [Pupil Projection Methodology](#).

Principles for investment: Statutory Duties

The county council has a range of statutory duties to fulfil in its capacity as education authority for Lancashire, this includes to:

- Provide sufficient school places for every child in Lancashire who wants one
- Promote high educational standards
- Provide fair access and equal opportunity
- Promote the fulfilment of every child's potential
- Promote diversity in provision
- Expand popular and successful schools; and
- Increase opportunity for parents and carers to access schools of their choice

Principles underpinning capital investment (Cabinet, January 2020)



Characteristics for education infrastructure

In order to ensure that proposed projects take account of the nature of local educational requirements, characteristics and organisation across the school phases, the following principles are identified:

- To ensure the sufficiency and sustainability of school places;
- Education provision is inclusive, reflects the needs of the community, skills requirements and economic development;
- Infrastructure development should not destabilise education improvement in the area;
- Consideration is given to both mainstream and special needs capacity;
- Support local demand and minimise need for capital expenditure where possible;
- Maximise capacity in Private Finance Initiative and Building Schools for the Future premises;
- Enable parents and carers to access places at the right time;
- Prioritisation of condition related works utilising Department for Education guidance on good estate management for schools;
- Deliverability of projects taking into account factors such as cost, site conditions and timescale.

Funding for projects

- Department for Education Basic Need Grant. Allocated on an annual basis against SCAP return as proportion of overall pot for England
- School contributions, mainly for fixtures & fitting, ICT etc.
- Section 106 or Community Infrastructure Levy (CIL) from developers
 - Used to part fund 22 school expansion projects to date across 6 districts.
 - Contributions already committed to these projects are approx. £6million.

Longer term growth

- Ongoing dialogue with district councils in relation to long term planning as part of their Local Plans. Districts will be at different stages.
- Secure education infrastructure to mitigate the impact of development (land and funding contributions through s.106 agreements or CIL community infrastructure levy)
- Where the need for a new school is identified at the Local Plan stage we consider requirements for early years and special education needs

Housing demand and developer education contributions



<https://www.lancashire.gov.uk/media/919346/annex-2-education-methodology.pdf>

https://assets.publishing.service.gov.uk/government/uploads/system/uploads/attachment_data/file/909908/Developer_Contributions_Guidance_update_Nov2019.pdf

Housing developments

Where new development create demand for school places in excess of those available, we ask district councils to support our request for financial contributions and/or land from developers, proportionate to impact, to mitigate against the effect of the development on education infrastructure

Contributions methodology

Our methodology reflects the Department for Education 'securing developer contributions for education' guidance (November 2019) which expects local authorities to seek contributions towards education infrastructure required as a result of housing growth

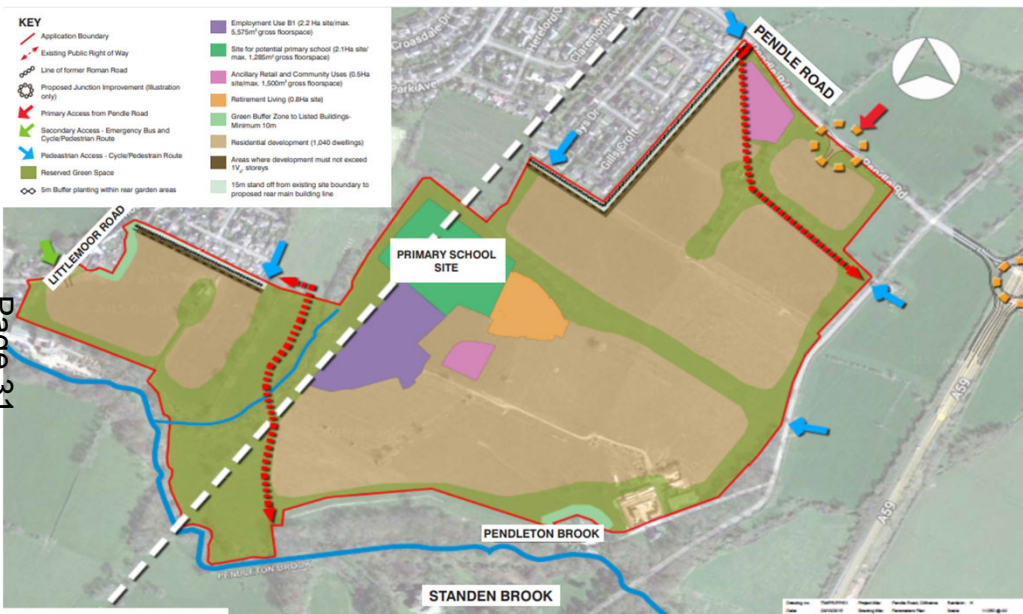
Sustainability

If a developer does not agree to payment of the education contribution then we cannot guarantee that children yielded by the development will be able to access a school place within reasonable distance from their home, so the development could be considered to be unsustainable

Transparency

Contributions are reported through annual Infrastructure Funding Statements

Delivery



Expanding the age range at Ribblesdale High School, to become an all-through school, providing additional primary places for Clitheroe

Timescale

Stage	Timescale
Informal consultation (current stage)	28 June 2021 - 23 July 2021
Statutory consultation	September - October 2021
Decision making	December 2021
Construction work begins	April 2022
Implementation	September 2023

<https://www.lancashire.gov.uk/council/performance-inspections-reviews/children-education-and-families/school-organisation-reviews/>



Thank you

Any questions?

Agenda Item 6

Education and Children's Services Scrutiny Committee

Meeting to be held on Wednesday, 1 September 2021

Electoral Division affected:
(All Divisions);

Education and Children's Services Scrutiny Committee Work Programme 2021/22

(Appendix 'A' refers)

Contact for further information:

Samantha Parker, Tel: (01772) 538221, Senior Democratic Services Officer,
sam.parker@lancashire.gov.uk

Executive Summary

The draft work programme for the Education and Children's Services Scrutiny Committee is attached at Appendix 'A'.

The topics included in the work programme were identified at the work planning workshop held on 5 July 2021.

Recommendation

The Education and Children's Services Scrutiny Committee is asked to:

- i. Discuss and agree the draft work programme for 2021/22.
- ii. Consider key lines of enquiry for future meeting topics.
- iii. Discuss any additional representation required from key officers/partners.

Background and Advice

A draft statement of the work to be undertaken by the Education and Children's Services Scrutiny Committee for the 2021/22 municipal year is set out at Appendix 'A'.

The work programme will be presented to each meeting for consideration by the Committee.

Members are requested to discuss and agree the draft work programme, consider key line of enquiry for future meeting topics and representation.

Consultations

NA

Implications:

This item has the following implications, as indicated:

Risk management

This report has no significant risk implications.

Local Government (Access to Information) Act 1985

List of Background Papers

Paper	Date	Contact/Tel
-------	------	-------------

NA

Reason for inclusion in Part II, if appropriate

NA

Education and Children's Services Scrutiny Committee

Work Programme 2021-22

The Education and Children's Services Scrutiny Committee Work Programme details the planned activity to be undertaken over the forthcoming municipal year through scheduled Committee meetings, task group, events and through use of the 'rapporteur' model.

The items on the work programme are determined by the Committee following the work programming session at the start of the municipal year in line with the Overview and Scrutiny Committees terms of reference detailed in the County Councils Constitution. This includes provision for the rights of County Councillors to ask for any matter to be considered by the Committee or to call-in decisions.

Coordination of the work programme activity is undertaken by the Chair and Deputy Chair of all of the Scrutiny Committees to avoid potential duplication.

In addition to the terms of reference outlined in the [Constitution](#) (Part 2 Article 5) for all Overview and Scrutiny Committees, the Education and Children's Services Scrutiny Committee will:

- Scrutinise matters relating to education delivered by the authority and other relevant partners.
- Fulfil all the statutory functions of an Overview and Scrutiny Committee as they relate to education functions of a Children's Services Authority.
- Scrutinise matters relating to services for Children and Young People delivered by the authority and other relevant partners.
- Review and scrutinise any matter relating to the planning, provision and operation of the health service in the area and make reports and recommendations to NHS bodies as appropriate
- Invite interested parties when reviewing any matter relating to the planning, provision and operation of the health service in the area, to comment on the matter and take account of relevant information available, particularly that provided by the Local Healthwatch
- Review and scrutinise any local services planned or provided by other agencies which contribute towards the health improvement and the reduction of health inequalities in Lancashire and to make recommendations to those agencies, as appropriate
- Take steps to reach agreement with NHS body, in the case of contested NHS proposals for substantial service changes

- Refer a matter to the relevant Secretary of State in the case of contested NHS proposals for substantial service changes where agreement cannot be reached with the NHS
- Refer to the relevant Secretary of State any NHS proposal which the Committee feels has been the subject of inadequate consultation
- Scrutinise the social care services provided or commissioned by NHS bodies exercising local authority functions under Section 31 of the Health Act 1999
- Draw up a forward programme of health scrutiny in consultation with other local authorities, NHS partners, the Local Healthwatch and other key stakeholders
- Acknowledge within 20 working days to referrals on relevant matters from the Local Healthwatch or Local Healthwatch contractor, and to keep the referrer informed of any action taken in relation to the matter
- Require the Chief Executives of local NHS bodies to attend before the Committee to answer questions, and to invite the chairs and non-executive directors of local NHS bodies to appear before the Committee to give evidence
- Invite any officer of any NHS body to attend before the Committee to answer questions or give evidence

The Work Programme will be submitted to and agreed by the Scrutiny Committees at each meeting and will be published with each agenda.

The dates are indicative of when the Education and Children's Services Scrutiny Committee will review the item, however they may need to be rescheduled and new items added as required.

Topic	Scrutiny Purpose	Lead Officers/organisations	Proposed Meeting Date
School Place Planning	'How to' guide on school place planning ahead of the updated School Place Provision Strategy 2021-2026 release	Director of Strategy and Performance/Head of Asset Management/Admissions Manager	1 September 2021
Maintained Nurseries	Update on the local authority's engagement with maintained nurseries	Acting Director of Education, Culture and Skills/Interim Head of Early Years	5 October 2021
School Place Provision Strategy 2021-26	Review of the draft School Place Provision Strategy 2021-26 prior to Executive decision taken	Director of Strategy and Performance/Head of Asset Management	5 October 2021 (TBC)
Education Strategy	Review of strategy prior to Executive decision taken	Acting Director of Education, Culture and Skills/Head of Service Education Improvement 0-11	9 November 2021
Children and Young People's Mental Health	Post Covid impact and progress update on CAMHS redesign	Director of Policy, Commissioning and Children's Health/NHS	7 December 2021
SEND Partnership Plan	SEND partnership plan update	Head of Service Inclusion/Zoe Richards	7 December 2021
Children Looked After	Housing, NEET, services/schools' transitions	Director of Children's Services/Head of Service Looked After Children Leaving Care	18 January 2022
Children's Health	Updates and areas of concern	Director of Public Health	18 January 2022 (TBC)
Lancashire Schools Attainment Outcomes	Annual report on attainment outcomes in schools across Lancashire	Acting Director of Education, Culture and Skills/Head of Service Education Improvement 0-11	22 February 2022

Topic	Scrutiny Purpose	Lead Officers/organisations	Proposed Meeting Date
School Travel	Review of current travel schemes and potential initiatives (walking school buses, mums for lungs, school streets, shared rides, community bus schemes, road safety, update on the SEND home to school transport policy review	TBC	22 February 2022 (TBC)
School Travel (ctd)	Air pollution, bus service redesign, new homes – joint session with other scrutiny committees TBC	TBC	16 March 2022
Not in Employment, Education or Training (NEET)	Review of measures in place and lessons learned - data trends, CLA, young carers, alternative provision colleges	Director of Education, Culture and Skills Alternative Provision	20 April 2022
NEET (ctd)	Review of apprenticeships data, work based training, district data link, accessibility	Lancashire Enterprise Partnership District Council leads	17 May 2022

Additional topics identified:

- Covid recovery in schools – invites to headteachers, LASSH etc to ascertain support required from the authority
- SEND – covid recovery, in house ed psych and assessors vs costs to external agencies, auditory and sensory disorder, costs, short breaks
- Attainment – funding to support
- Cabinet work on low carbonisation (9 July Cabinet meeting) – education/waste renewables

Task Group recommendation updates:

- Schools Causing Concern
- Pupils in Special Schools with Medical Conditions